



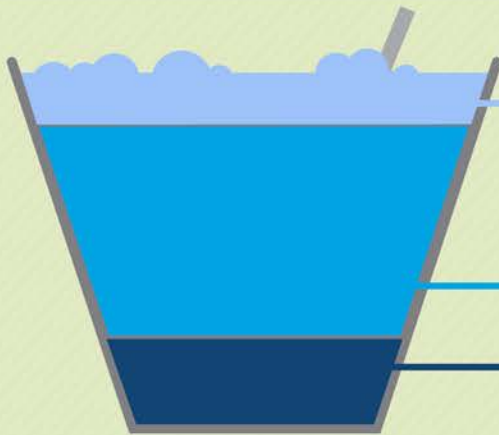
Unlock the true potential of your Retail Pro!



RETAIL PRO UNIVERSITY'S USER TRAINING CLASSES

➤ Retail Pro User Training optimizes the full ROI of your Retail Pro platform. With more Retail Pro knowledge, you can be more confident about your operations and make better decisions, which will help you realize your company's vision...faster.

➤ Your Full Spectrum Training Resources



How Much Are You Leaving Behind?

➤ MyRetailPro Portal

- Retail Pro TV with hundreds of on-demand training videos
- Complete Retail Pro Documentation
- Knowledgebase

➤ Comprehensive Retail Pro Training

- Advanced Retail Pro Training in a Classroom or Online
- Retail Pro Certification

➤ Partner Training

- Introductory Retail Pro training
- Cashier Training

➤ Learning Options And Benefits

Retail Pro University offers learning options that let you **train at your convenience**, at your pace.

Online

- Complete classes at your own speed
- Very cost-effective

Retail Pro HQ

- Structured, hands-on learning
- Same comprehensive training as Partners

On Location

- More time and cost-effective for large groups & staff
- Tailored to your needs

➤ What Other Retailers Are Saying About User Training Classes

"If you are going to implement Retail Pro in your organization...it is a must to have a clear understanding of the product...before you ask external consultants to implement.

It is a great idea to get your key IT members and also your super users to get certified, for it would benefit the organization more than the individuals."

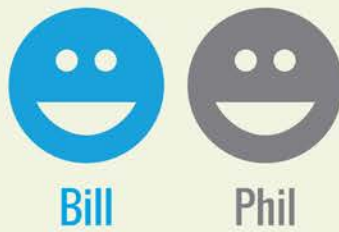
Murali Seshan,
General Manager, Jawad Business Group

"The certification class is a tremendous opportunity to learn use Retail Pro and all of the functionality that it has. I recommend it to anyone wishing to enter the world of Retail Pro.

Luis Medina,
Programmer, Multi-Business Systems

The Story of Bill & Phil

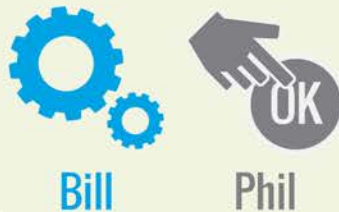
Retailers Bill & Phil bought Retail Pro. Both started using it in their stores at the same time.



After their basic Partner training, Bill also decided to enroll his staff in Retail Pro University. Phil did not.



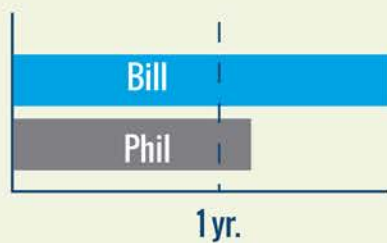
Bill & his staff became advanced Retail Pro users, utilizing a host of automation tools in Retail Pro, setting up advanced customer management workflows, and customizing screens to boost productivity & speed up transaction times. Phil didn't know these tools existed.



Bill & Phil had some turnover. Bill's new staff quickly logged into MyRetail Pro to get them up to speed. Phil didn't, and had to schedule an appointment with their Partner for the following week.



After one year of using Retail Pro, Bill & Phil both reached their goals. Bill reached his goals 6 months faster.



Be Like Bill!



Learn more about your Retail Pro. To get started, connect with Retail Pro University trainers today.

Additional Benefits

- Live, instructor-led training classes, either on-site or at RPI headquarters, to guarantee all questions are answered. Always.
- Access to all Retail Pro University Training & Certification resources. Yes, the same training as your servicing Business Partner.
- Open to Retail Pro 9 users of all experience levels. Whether you are at the beginning of your journey with Retail Pro or a seasoned user, you will find valuable insights.
- Opportunity to learn everything necessary for 3 key Retail Pro University certifications:
 - Retail Pro Applications Expert (RPAE)
 - Retail Pro Systems Engineer (RPSE)
 - Retail Pro Reports Professional (RPRP)

Current on Software Assurance?

Be sure to use your benefits:

- 75% discount on training classes
- 10 bonus training credits annually

2014 Class Schedule (Folsom, Ca, US)

Spring	Summer	Fall	Winter
Mar. 10-21	May 5-16	Aug. 4-15	Nov 3-14
Apr. 7-18	Jun. 9-20	Sep. 8-19	Dec 1-12
	Jul. 7-18	Oct. 6-17	

Need an instructor to come to you?

Email us at training@retailpro.com

TO REGISTER, email: training@retailpro.com